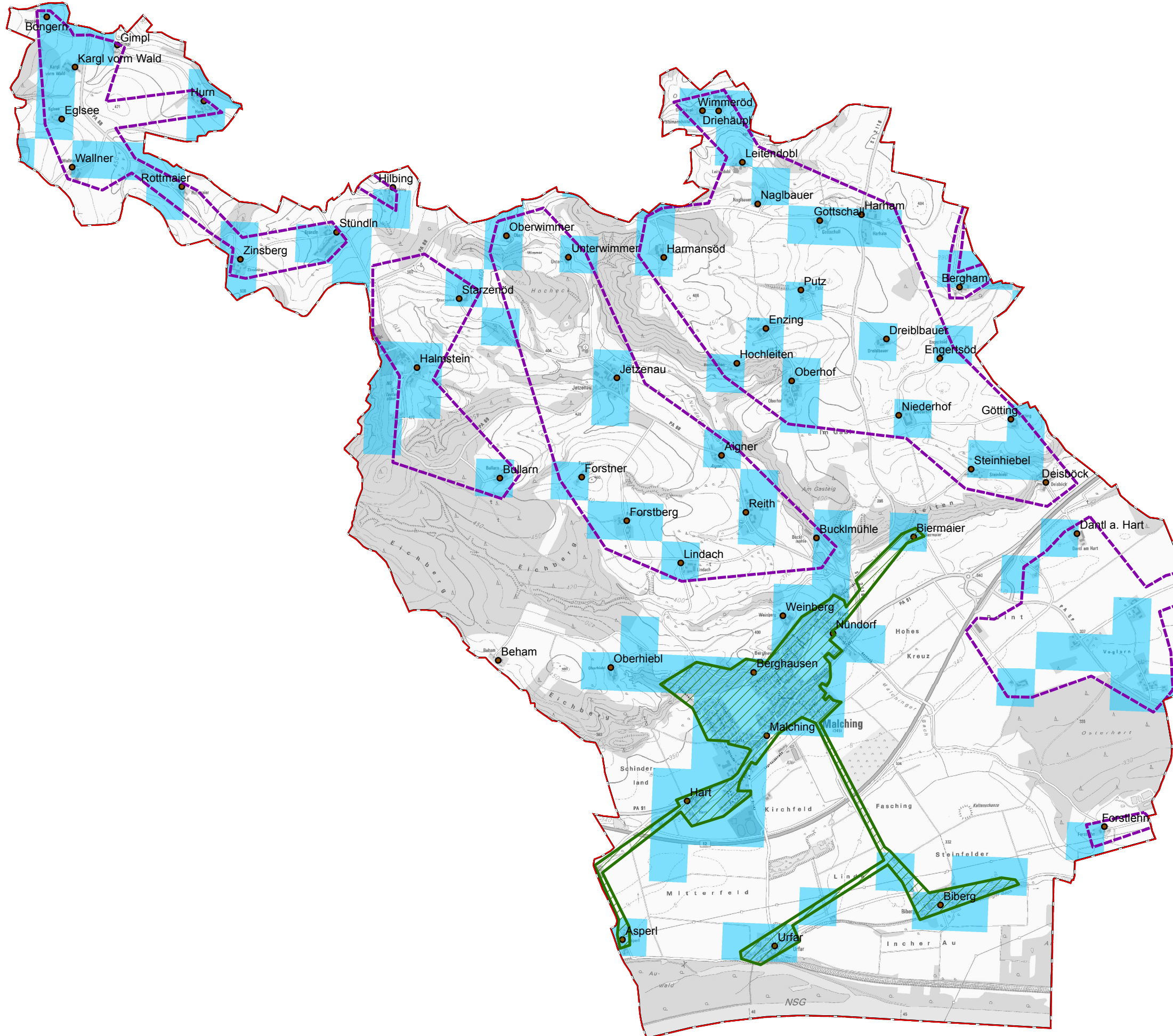
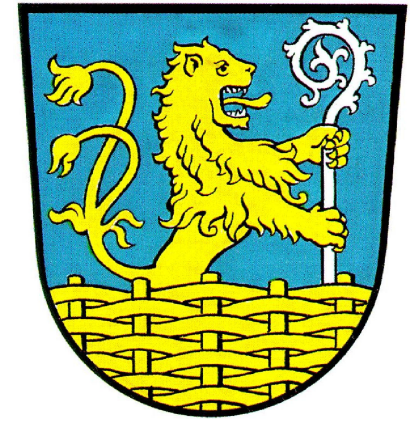









Gemeinde Malching



Legende

-  vorl. Erschließungsgebiet II
-  Ausbau gefördert oder eigenwirtschaftlich
-  Gemeindegrenze
-  Ortsteile

Versorgung

-  ≤ 15 Mbit/s Down / 1 Mbit/s Up
-  16 Mbit/s Down / 1 Mbit/s Up
-  ≥ 30 Mbit/s Down / 2 Mbit/s Up



Koordinierungsstelle
Landratsamt Passau
Domplatz 11
94032 Passau